

# Dallas Lake Park

0505 W 700 S Dallas Lake Park is on the south shore of Dallas Lake; playground, wetland natural area with observation deck, and nearly 2 mile walking trail.

## Sweet Gum Shelter

Located at the playground. Seats up to 120.

Monday-Thursday \$100

Friday-Sunday \$150

**Lodge** seats up to 125 inside and 24 outside on a patio. It is air conditioned with a kitchen and modern restrooms.

Daily \$214 (includes tax)

\$125 Refundable Security Deposit Required



## Weekend Packages

Each site is available for a Weekend Package three day rental. Contact Park Office for details.

# Rules & Policies

- Renter must be 18 years of age & present at rental.
  - **Alcoholic beverages are prohibited.**
  - Damaging signs, shelters, and structures is prohibited.
  - It is unlawful to litter or dump trash in the park. Trash must be placed in receptacles.
  - Tents, canopies, awnings, etc. are not allowed in shelter or picnic areas except in **approved** designated areas.
  - No amplified sound without written permission of Park Director. The volume of music should not disturb other park patrons or renters. 75 decibels or below.
  - No live animal exhibits - no petting zoo or pony rides.
  - Smoking is not allowed in any park building. Smoking materials are not to be left on ground.
  - Defacement, destruction, removal or disturbance of property, equipment, wildlife, flora or natural features is prohibited. Collecting nuts, berries, & mushrooms is allowed.
  - All facility renters must be out of the park by posted park closing time. **Park hours are:**  
**Summer: May 1 to Labor Day 8 a.m. - 9 p.m.**  
**Winter: Labor Day to May 1 8 a.m. - Legal Sunset**
  - Pets must be restrained on a six (6) foot leash. No pets are allowed in buildings, pavilions, or on beach. Service dogs are allowed. Owners must clean up after their pets.
  - Swimming is permitted in designated areas and at posted times only.
  - Fishing is allowed. Hunting is prohibited.  
(All state laws apply)
  - Disorderly conduct is prohibited, as well as other activities which are deemed dangerous or improper.
  - Maximum speed is 15 mph or as posted. Vehicles may be operated only on roadways.
  - Fires are restricted to proper containers, in limited areas. No ground fires are permitted. Charcoal grill fires only.
  - A damage and extraordinary clean-up security deposit of \$125 will be required for all enclosed buildings.
  - **Horses must be tied to hitching posts.** Horses tied to trees or shrubs are a violation of County Ordinance 2001-7-16.
  - No camping.
- Full rule list available on website, in office, & by request.

0505W 700S Wolcottville IN 46795  
260-854-2225  
[www.lagrangecountyparks.org](http://www.lagrangecountyparks.org)  
[parks@lagrangecounty.org](mailto:parks@lagrangecounty.org)  
office hours  
m-f 8:00-12:00 12:30-3:30

2024 Updated 1.1.2024



# Rental Facilities

Celebrate your event at one of our park venues.

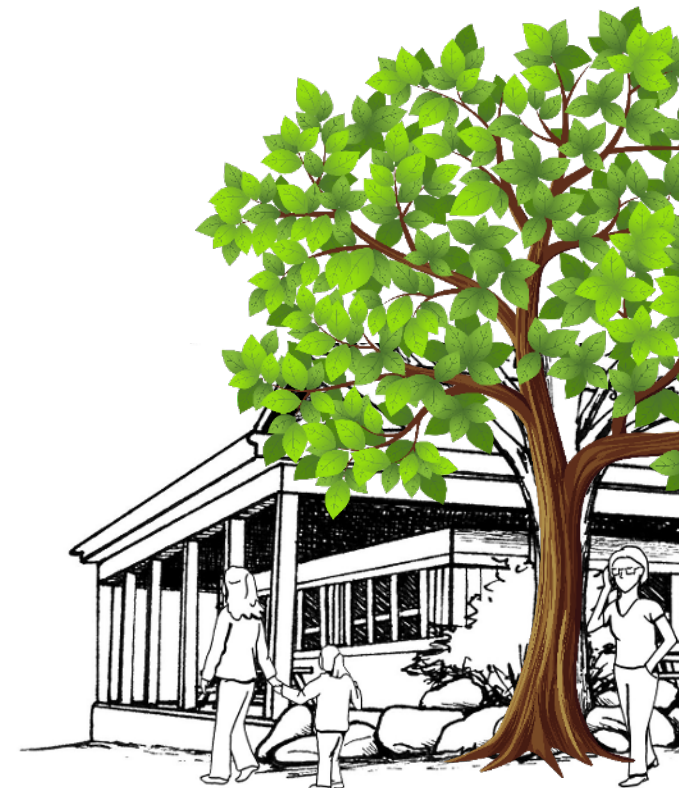
- Graduations
- Reunions
- Meetings
- Weddings
- Weddings
- Bridal Shower
- Baby Shower
- Birthdays

Reservations may be made up to one year in advance.

Contact the Park Office to schedule.

260-854-2225

[parks@lagrangecounty.org](mailto:parks@lagrangecounty.org)



## Delt Church Park

6455S 200W Delt Church Park borders the North Branch of Elkhart River. Amenities include the Megatower Playground, 18-hole disc golf course, large grass playing field, and wooded hiking trails.

All Park pavilions have access to electricity, water supply, and a grill.

### Greenwood Pavilion

Seats approx 100. Restrooms nearby. Close to playground, trail, & disc golf course.

On West edge of Center Field

Monday-Thursday \$175

Friday-Sunday \$200

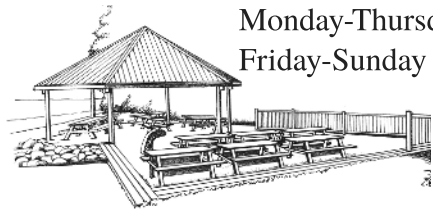


### South River Pavilion

Seats up to 96. Deck overlooks & steps down to the river. Close to playground. Nearest restrooms at playground.

Monday-Thursday \$100

Friday-Sunday \$125



### East River Pavilion

Seats up to 72.

Restrooms nearby.

Located next to the river.

Monday-Thursday \$75

Friday-Sunday \$100



## Pine Knob Clubhouse

2825E SR 120 Pine Knob Park includes a 3-D archery trail with life-sized game targets, fishing piers on Meteor Lake and Duff Lake, and nearly 4 miles of accessible boardwalks and trails.

The Clubhouse seats approximately 64.

It is air conditioned with a kitchen, and modern restrooms.

Available year-round 8am-9pm

Cost: \$200.00 per day  
(includes tax)

\$125 Refundable  
Security Deposit  
Required.

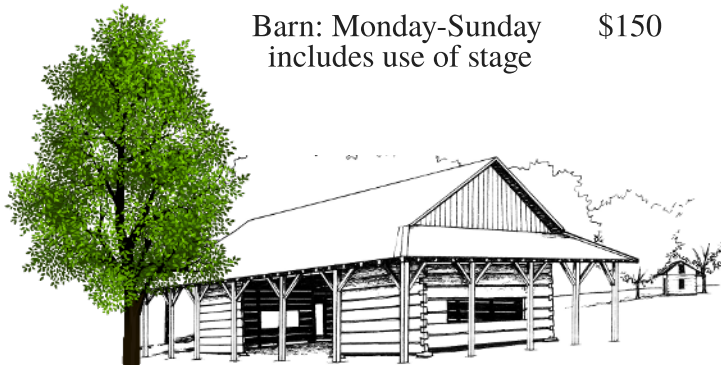


## David Rogers Memorial

2355W 550S Rogers Village is authentic pioneer log cabins and an 1826 log barn. A picturesque location for an outdoor event in a rustic setting. Electricity and water supply are available.

The 1826 log barn is available for rental.

Barn: Monday-Sunday \$150  
includes use of stage



## Maple Wood Nature Center

4550E 100S LaGrange County Nature Preserve is a northern deciduous forest with hiking trails. Maple Wood Nature Center is a timber frame education center in the park.

Maple Wood Nature Center Classroom is available for group rentals.

Seating is approximately 64 at tables.

Full kitchen available; 2 indoor restrooms; heating and air conditioning.

Cost: \$200.00 per day (includes tax)

\$125 Refundable Security Deposit  
is Required.

Available year-round\* 8am-9pm

\*Not available in February and March